

## Service Targets

- Students and parents of our serving schools.
- Eligible applicants may contact the stationing social worker directly for services. Service will be terminated once students have graduated from/left the schools.
- Please contact the stationing social worker or our Service Head for any enquiry and feedback.

# SHALL WE TALK

## Service Objectives

- To help students develop their potentials to the fullest, achieve healthy personal growth, attain adequate and proper school education, establish harmonious human relationships and elicit their concern for the community;
- To help students with their personal, family and interpersonal relationships or schooling problems;
- To strengthen the linkage among students, families, the school and the community.

## Service Approach

- Consultation, Counselling, Casework and Referral Service
- Groups and Mass Programmes
- Coordination & Mobilisation of Community Resources

## Service Quality

- We now have a system in place to monitor our service performance. Please feel free to contact us to request a copy of our policy on Service Quality Standards.

## List of Secondary Schools we served and contact

Serving Schools	Contact
CCC Chuen Yuen College	2485 4583
CCC Heep Woh College	2323 4265
CCC Hoh Fuk Tong College	2613 0211
CCC Kei Heep Secondary School	2320 4557
CCC Kei To Secondary School	2627 1028
CCC Ming Kei College	2393 5469
CCC Rotary Secondary School	2337 8945
CCC Tam Lee Lai Fun Memorial Secondary School	2452 2422
CCC Yenching College	5802 5428
Christ College	2635 3330
Munsang College	3655 3523
True Light Girls' College	2195 6652
Ying Wa College	2748 5809
Lai Chack Middle School	2721 3086
Wa Ying College	2760 7772
Kowloon True Light School	3655 0127
Pooi To Middle School	2336 1706
Pui Ching Middle School	2767 3319
Jockey Club Ti-I College	2691 7150 Ext 8040
Lok Sin Tong Young Ko Hsiao Lin Secondary School	2605 6632

# Mission and Vision

## Belief

Rooted in the Christian faith,  
responding to the call of God, and  
imitating Jesus Christ in our  
service to the community

## Vision

Towards a Benevolent  
and Just Society Holistic  
Development for All

Hope

## Mission

Instill Hope  
Advocate Justice  
Promote Harmony

Justice

## Core Values

People Centredness  
Caring for the Whole Person  
Professional Team  
Pursuing Excellence and Innovation  
Benevolence and Justice  
Cultivating Fullness of Life

Harmony



Since 1952, **Hong Kong Christian Service (HKCS)** has been working towards a humane and just society. We provide the needy with suitable, professional and quality services genuinely. We care for the disadvantaged and the neglected. We uphold our vision of "Towards a Benevolent and Just Society, Holistic Development for All" by instilling hope, advocating justice and promoting harmony for our people and society.

### Hong Kong Christian Service

✉ : [info@hkcs.org](mailto:info@hkcs.org)  
☎ : 2731 6316  
📠 : 2731 6333  
🏠 : 33 Granville Road, Tsimshatsui, Kowloon, Hong Kong  
🌐 : [www.hkcs.org](http://www.hkcs.org)  
📘 : [www.facebook.com/hkcs.org](https://www.facebook.com/hkcs.org)

### School Social Work Service

✉ : [ssw@hkcs.org](mailto:ssw@hkcs.org)  
☎ : 2389 4242  
📠 : 2790 4157  
🏠 : Unit 111-116, G/F., Kwai Yuen House,  
Chuk Yuen (South) Estate, Wong Tai Sin, Kowloon, H.K.

### School Social Work Service

Office Hours

Monday to Friday 9:00am to 5:45pm

### School Social Workers Stationing hours

Monday to Friday 9:00am to 5:45pm

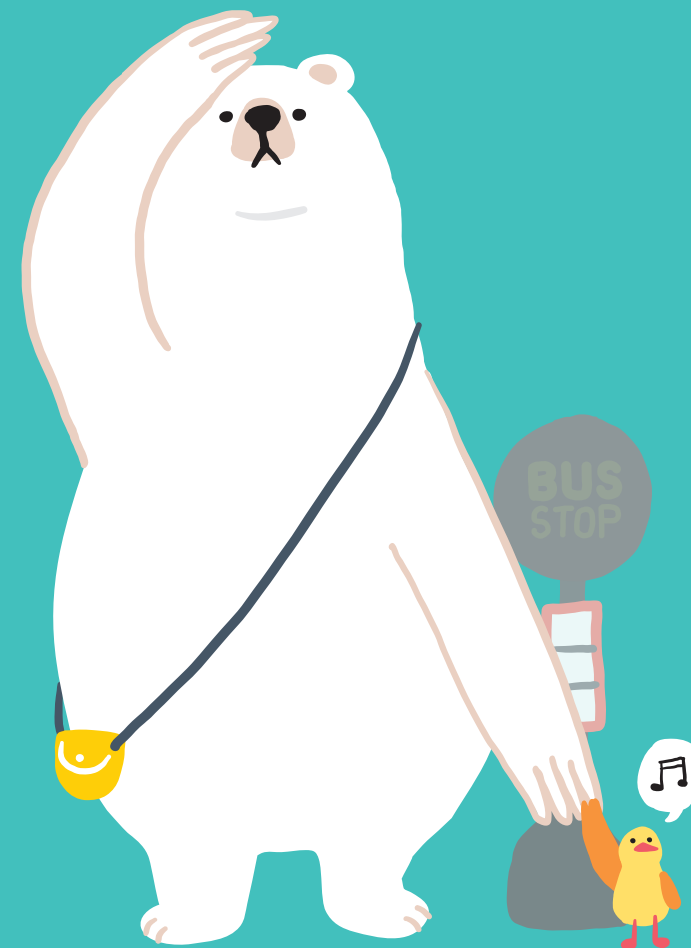
Copies : 18,000

August 2021



HONG KONG  
CHRISTIAN SERVICE  
care for all excel in all  
School Social Work Service

## HONG KONG CHRISTIAN SERVICE School Social Work Service



# Hope stand by You